



FREEHOLD

House - Semi-Detached

3 BLENDON DRIVE, BEXLEY, DA5 3AA

Guide price

£700,000

FEATURES

- SOLD VIA WESTWOOD SIDCUP
- LARGER THAN AVERAGE ACCOMMODATION
- STUNNING REAR GARDEN
- THREE BEDROOM SEMI-DETACHED HOME
- BEAUTIFUL LOCATION CLOSE TO AMENITIES AND SCHOOLS



3 Bedroom House - Semi-Detached located in Bexley

****SOLD VIA WESTWOOD SIDCUP, SIMILAR PROPERTIES REQUIRED**** GUIDE PRICE £700,000
- £725,000 Large three bedroom semi-detached home on a highly desirable road close to amenities and popular schools.

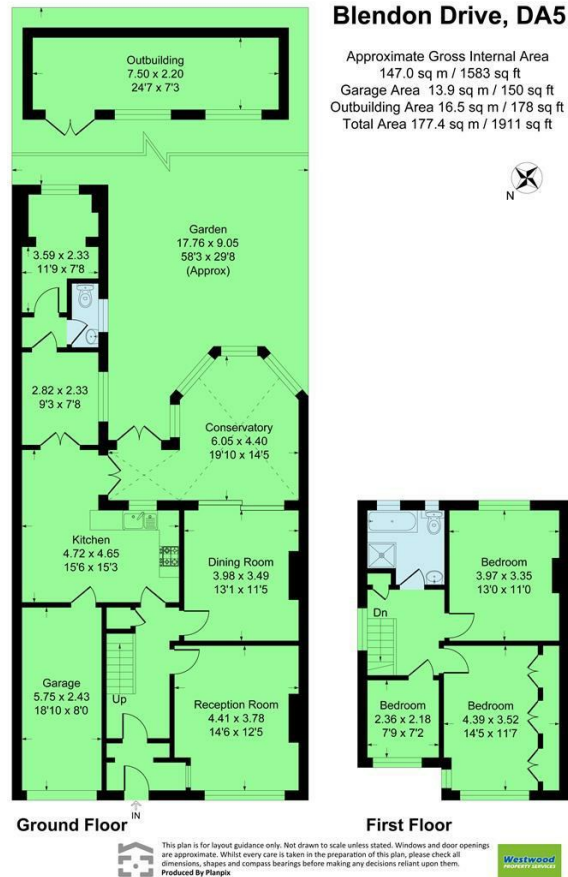
Call us on

020 8301 5511

sales@westwoodpropertyservices.co.uk

Council Tax Band

E



Energy Efficiency Rating		Current	Potential
<i>Very energy efficient - lower running costs</i>			
(92 plus) A			
(81-91) B			
(69-80) C			80
(55-68) D		61	
(39-54) E			
(21-38) F			
(1-20) G			
<i>Not energy efficient - higher running costs</i>			
England & Wales		EU Directive 2002/91/EC	

Agents Note: Whilst every care has been taken to prepare these particulars, they are for guidance purposes only. All measurements are approximate and are for general guidance purposes only and whilst every care has been taken to ensure their accuracy, they should not be relied upon and potential buyers are advised to recheck the measurements.

